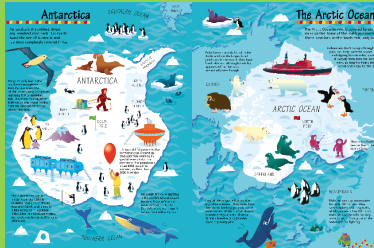




Let's Remember

Earth has 2 polar regions: the Arctic Circle in the Northern Hemisphere & the Antarctic Circle in the Southern Hemisphere.



Polar regions have long, cold winters and temperatures mostly below freezing. The weather can be very windy with little precipitation.

Our Big Question

How does the melting of the ice caps change the world?

I Need to Know...

Due to the tilt of the Earth, the poles experience nearly 24 hours of daylight during the summer months. This is called Polar Day or Midnight Sun. In the winter, the poles experience nearly 24 hours of darkness. This is called Polar Night.

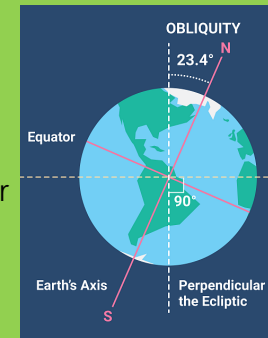
The physical geographical features of the polar regions include glaciers, ice fields and ice bergs.

Natural resources in the Arctic include oil, gas, minerals, metals, fish, wood and freshwater. Arctic inhabitants use the natural resources available for fuel, food and to sell to other countries.

Other countries are exploring the natural resources which the Poles may have and the impacts of this exploration.

Human activities are releasing gases into the atmosphere that are causing the temperature of the Earth to rise and its climate to change.

Climate change is affecting the Poles and this is having an impact on other countries.



Let's Explore

Research the British Antarctic Survey including the bases they have on Antarctica for scientific studies. What studies are taking place right now?

Find out about Greta Thunberg and her climate change campaign.

With these skills you could be a...

Geologist

Study the rocks and sediments in the polar regions to help understand past climates and ice conditions.